
Andover Hall Renewal Project

Harvard Divinity School

February 2019

Oak Tree Study

Red Oak Tree

At the community meeting in December 2018, we were asked a series of questions about the red oak tree including whether or not it could be moved. As part of the due diligence to understand all the possibilities about the tree, we commissioned a certified arborist to undertake an extensive examination of the tree to fully understand its structure, health and vitality.

Arborist Credentials:

ISA Board Certified Master Arborist Tree

Conclusion:

Red oak tree is High Risk, based on the likelihood of failure and impact and the consequences of tree failure.

Mitigation:

At your request, we explored other potential mitigation options.

Mitigation Recommendations:

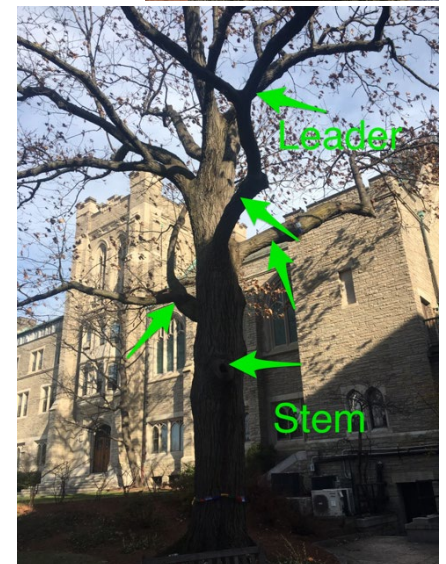
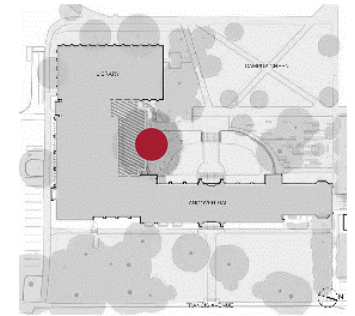
Remove the tree as soon as is feasible to eliminate the potential for failures and subsequent consequences.

Methodology:

Arborist performed a *Level 2 Basic visual assessment* and a *Level 3 advanced assessment*

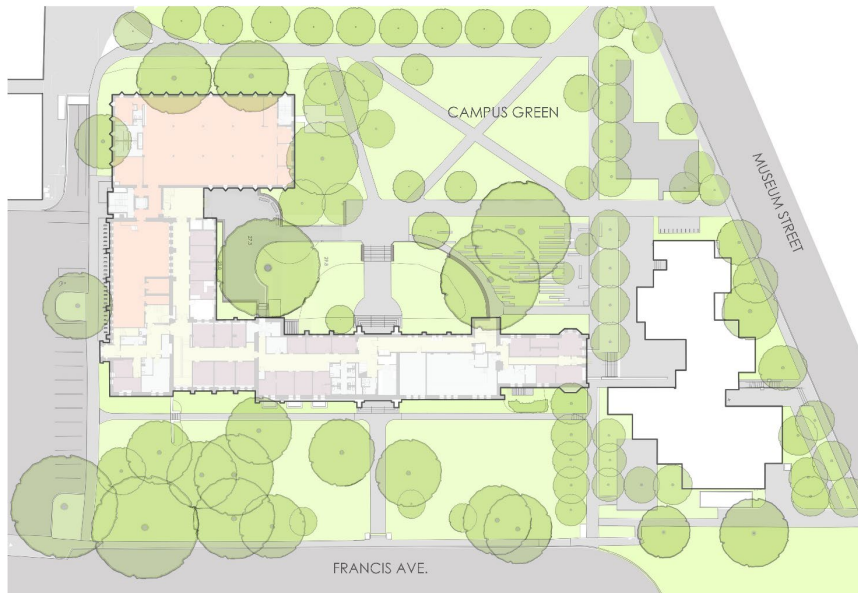
Assessment:

- The tree health is in irreversible decline.
- The tree has suffered significant decay in the trunk, one central leader, and 3 large lateral limbs.
- The likelihood of failure is **Probable** - failure may be expected under normal weather conditions within 3 years.
- Risk rating is **High**.
- The consequences of failure and impact could be **Significant**, the impact may involve personal injury, property damage, or considerable disruption.



■ Area of Investigation: Level 3 Assessment

Existing



Proposed



- Replace lost canopy and caliper of red oak tree upon completion of project construction
- Specific placement of new trees under study

New Trees Under Study



LIRIODENDRON TULIPIFERA
Tulip Tree



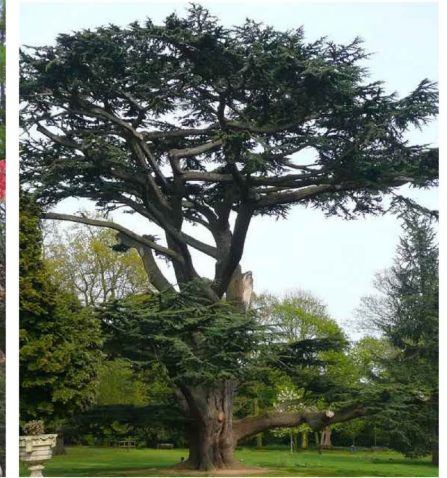
NYSSA SYLVATICA
Black Tupelo



GINKGO BILOBA
Ginkgo



OXYDENDRUM ARBOREUM
Sourwood



CEDRUS LIBANI
Cedar of Lebanon



QUERCUS COCCINEA
Scarlet Oak



CARYA OVATA
Shagbark Hickory



CLADRASTIS KENTUCKEA
Yellowwood



SASSAFRAS ALBIDUM
Sassafras

Mission

1816 *HDS Established*



Harvard Divinity School Photo

- Christian, non-denominational
- Training for Christian ministry

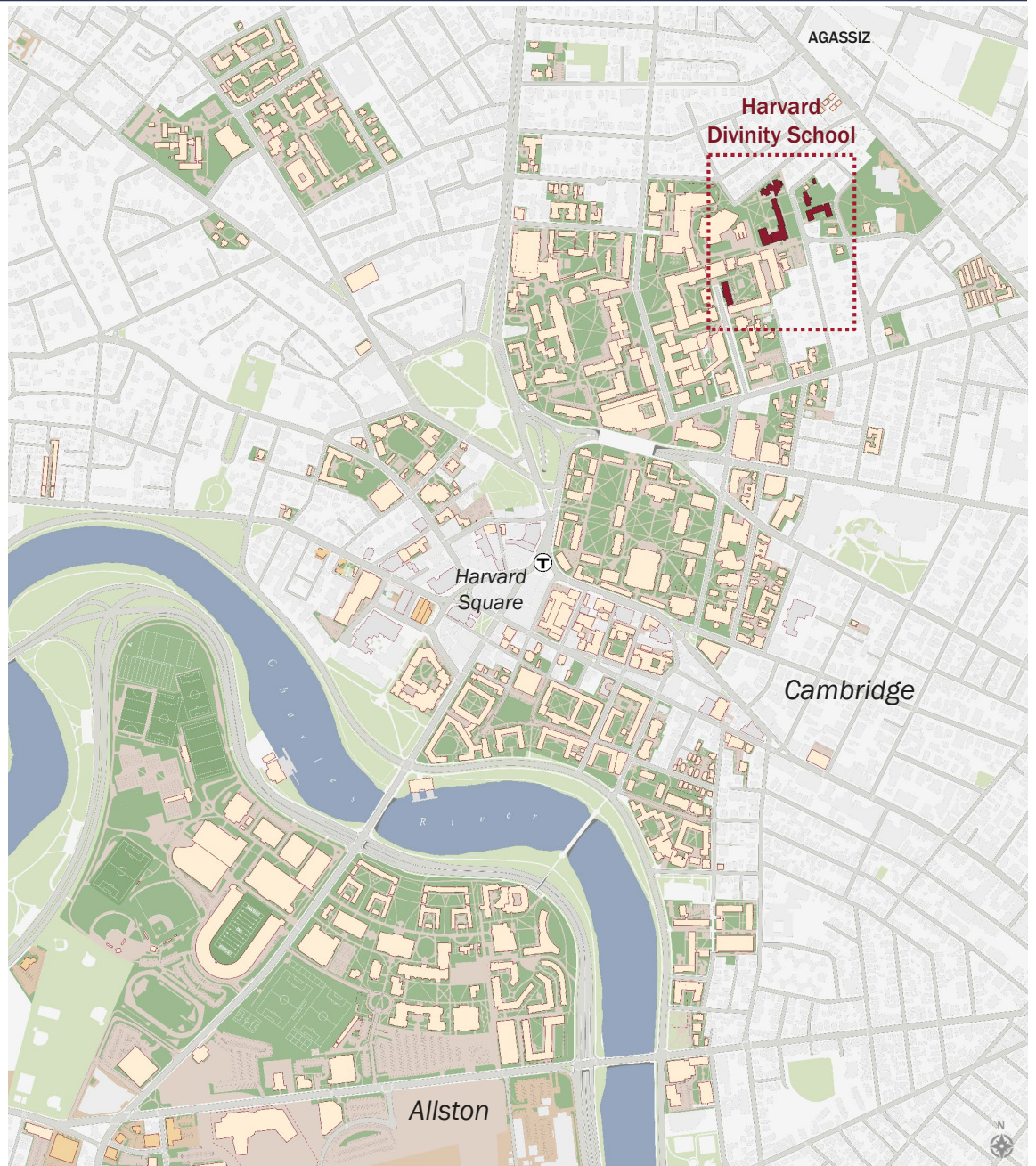
2019



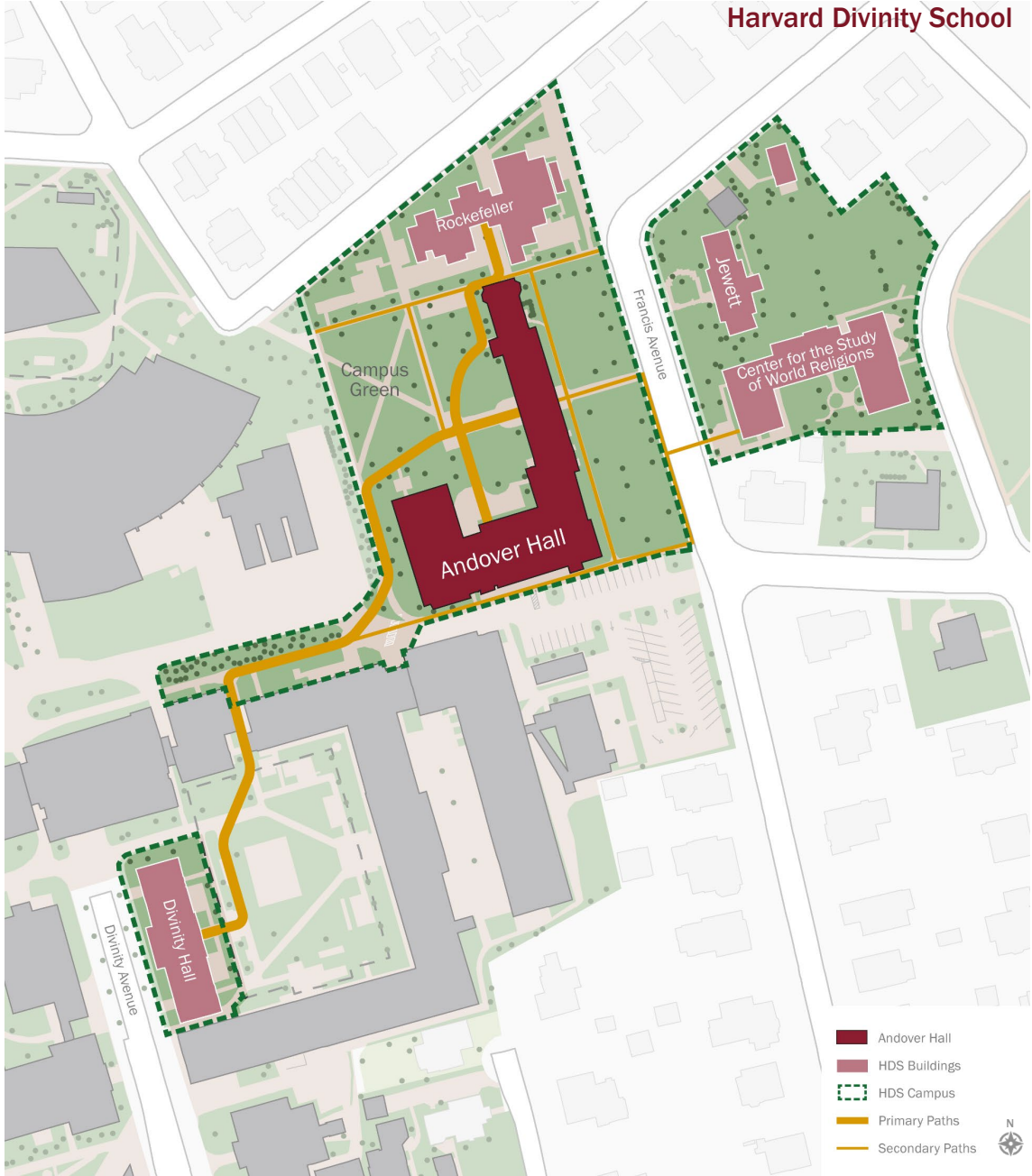
Justin Knight

- Global, multi-faith studies with Christian heritage
- Training for intellectual leadership, professional service and ministry for scholars around the globe
- Collaborative learning; diverse, broad interactions

Harvard Divinity School



- Andover Hall**
Center of the HDS Campus, Faith Space,
Study Spaces, Classrooms, Library
- Rockefeller Hall**
Administrative Offices
- Divinity Hall**
Faculty Offices, Student Services
- Center for the Study of World Religions**
Housing, Programmatic Office Space
- Jewett House**
Dean's House, HDS Community Garden



- Andover Hall
- HDS Buildings
- HDS Campus
- Primary Paths
- Secondary Paths



Campus Planning Principles

- Preserve Harvard's **Historic Character**
- Demonstrate a Commitment to **Design Excellence**
- Enhance Campus **Connectivity**
- Maximize the Utilization of **Existing Facilities** and Support Ongoing Renewal
- Maintain and Enhance Campus **Open Space**
- Promote Built Form in the Context of Existing **Campus Character**
- Create a **Sustainable** Campus
- Respect **Community** Context

Recent HDS Campus Improvements

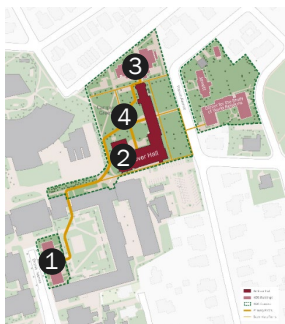
Campus Planning Principles:

- Preserve Harvard's **Historic Character**
- Demonstrate a Commitment to **Design Excellence**
- Enhance Campus **Connectivity**
- Maximize the Utilization of **Existing Facilities** and support Ongoing Renewal
- Promote Built Form in the Context of Existing **Campus Character**
- Maintain and Enhance Campus **Open Space**
- Create a **Sustainable** Campus
- Respect **Community** Context

1. DIVINITY HALL – 1999 Renovation



2. ANDOVER LIBRARY – 2000 Renovation / Addition



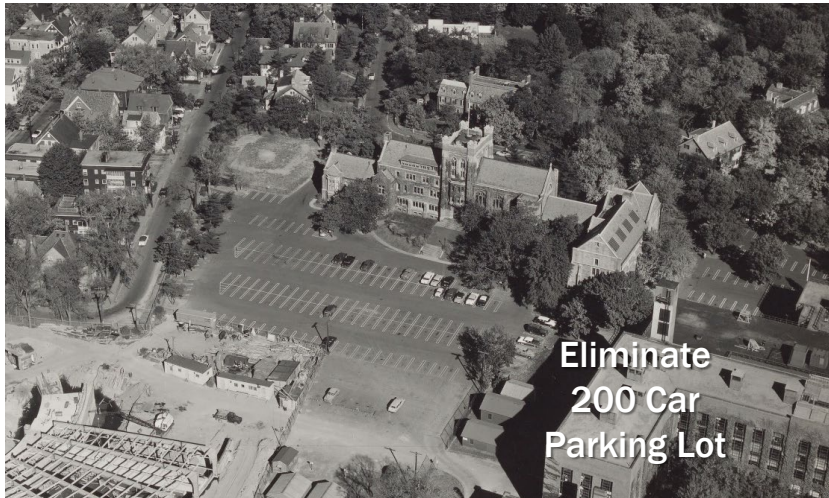
3. ROCKEFELLER HALL – 2008 Renovation / Repurpose



Campus Planning Principles:

- Preserve Harvard's **Historic Character**
- Demonstrate a Commitment to **Design Excellence**
- Enhance Campus **Connectivity**
- Maximize the Utilization of **Existing Facilities** and support Ongoing Renewal
- Promote Built Form in the Context of Existing **Campus Character**
- Maintain and Enhance Campus **Open Space**
- Create a **Sustainable** Campus
- Respect **Community** Context

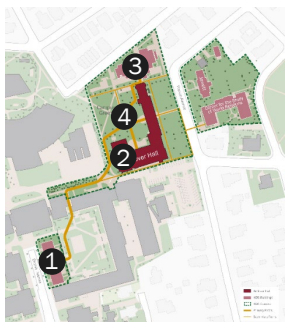
4. CAMPUS LANDSCAPE TRANSFORMATION



Before

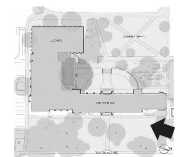


After





Andover Hall, 1911 - *Harvard's only Collegiate Gothic building*



Program Objectives

Andover Hall does not adequately support the current HDS mission in teaching and student life. This project is designed to align the facility with the mission, through the following **program objectives:**

- | | <u>PROPOSED PROGRAM:</u> |
|--|--|
| ● Foster inclusion and belonging by providing multi-faith space for all religions. | - Multi-faith space |
| ● Establish a welcoming and accessible main campus entrance for the Divinity School community, the Agassiz neighborhood and all visitors. | - Accessible main entrance |
| ● Provide adequate space for public programs and dialogues on religious understanding such as Religions and the Practice of Peace . | - Multi-Purpose Room |
| ● Right size, cluster, and provide adequate infrastructure for the classrooms and bring them into 21 st century teaching methods. | - 4 Classrooms |
| ● Promote social and intellectual exchange through the creation of indoor & outdoor gathering spaces that bring together all members of the Divinity School Community, its visitors and the public. | - Common space, Café, Terrace/landscape |
| ● Integrate the delivery of student services at the school's center for all of the Divinity School students. | - Student Services Offices |

Facility Renewal Objectives

Andover Hall (1911) has never been renovated comprehensively.

This project must address deferred maintenance through the following facility renewal:

- Repair **envelope** (roof, masonry, windows, etc.)
- Undertake **life safety** upgrades
- Install new **electrical, plumbing** systems
- Introduce **air conditioning** to building
- Improve **accessibility**
- Make major **sustainability** upgrades, target LEED Gold



Why Program Requirements Must Be Located in Andover Hall?

Andover Hall has been the heart of teaching and student life at HDS since 1935

- Program goals are to strengthen academic and social core, which takes place in Andover.
- Program adjacencies for teaching and student life can only be met in Andover – worship space, student life, teaching spaces, convening spaces, library, cafe.
- HDS campus edge location – at a distance from other Harvard student life amenities.
- HDS community needs its own spaces – too small to be dispersed.



Justin Knight



Steve Gilbert



Kris Sribbe / Harvard Gazette



Harvard Divinity School Photo

How to meet the Proposed Program at Andover Hall?

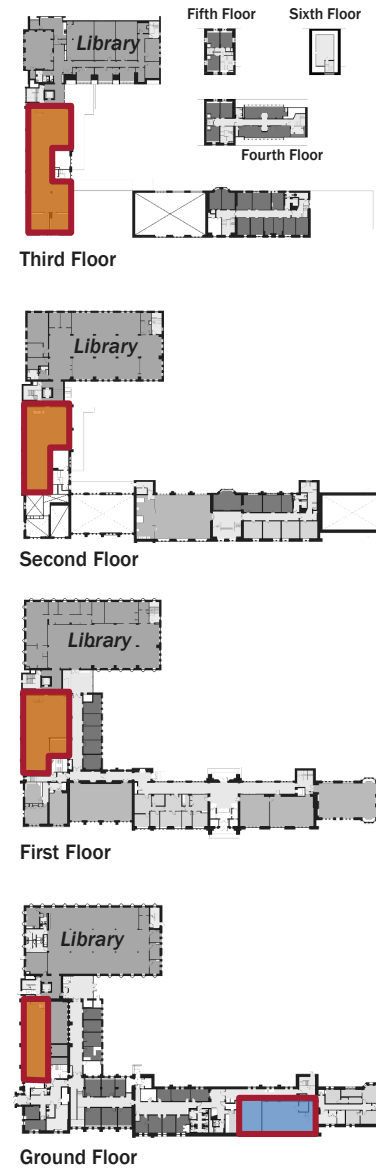
1. Free up space in the 90,000 sq ft Andover Hall building:

- Library collections stack space move off site
- Some library stacks transition to compact shelving, much denser, requires less space
- Mechanical spaces become smaller, more efficient



Approx. **16,000 sq ft**
are freed up within
Andover Hall.

Existing

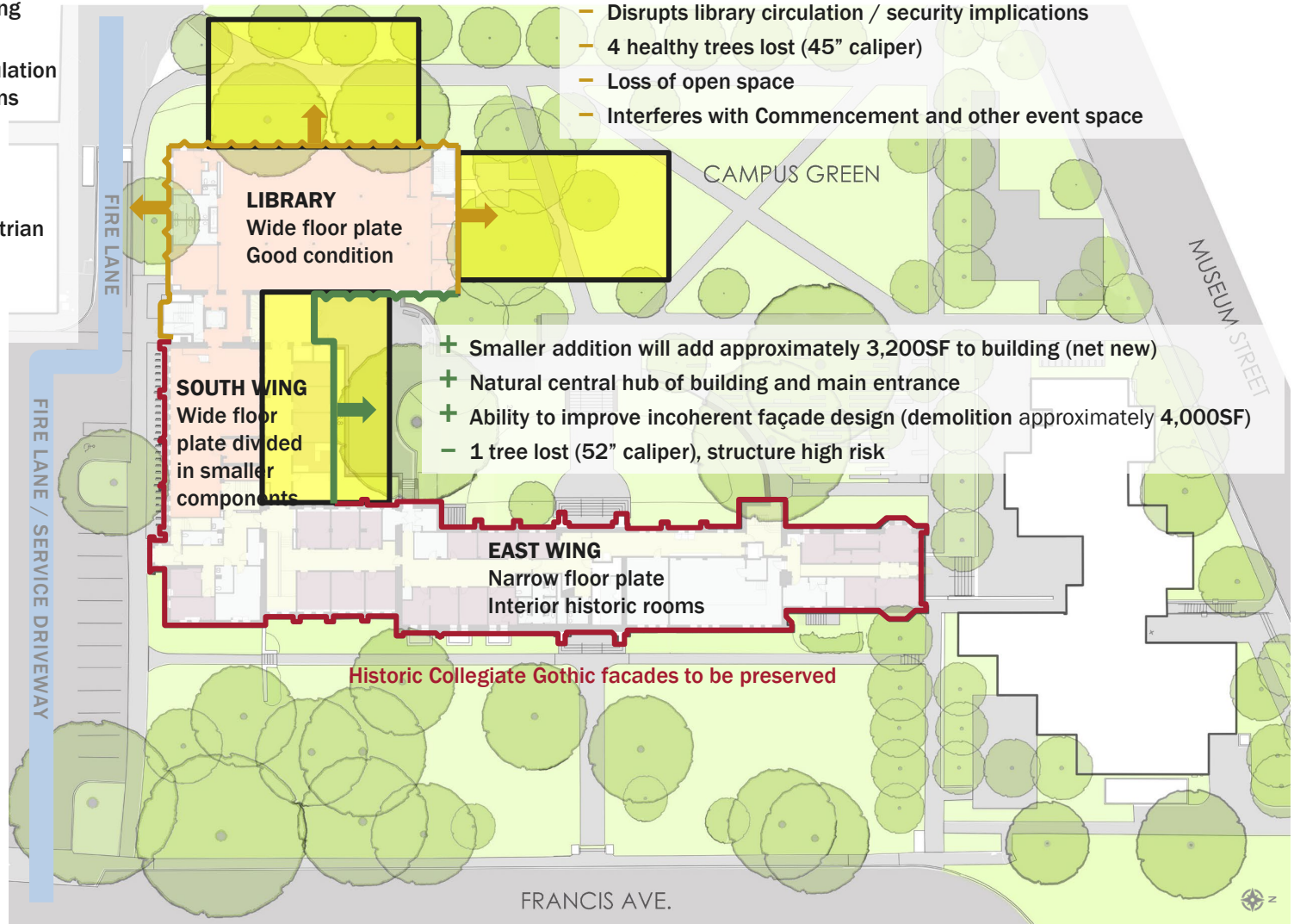


How to meet the Proposed Program at Andover Hall?

2. Key opportunities and limitations of the building:

- Larger addition. Will add ~13,000SF to building (net new)
- Disrupts library circulation / security implications
- 6 healthy trees lost (73" caliper)
- Loss of open space
- Obstructs key pedestrian pathway
- Underground major electrical vault

- Larger addition. Will add ~13,000SF to building (net new)
- Disrupts library circulation / security implications
- 4 healthy trees lost (45" caliper)
- Loss of open space
- Interferes with Commencement and other event space



- + Smaller addition will add approximately 3,200SF to building (net new)
- + Natural central hub of building and main entrance
- + Ability to improve incoherent façade design (demolition approximately 4,000SF)
- 1 tree lost (52" caliper), structure high risk

Floor Plans

Existing

Proposed

First Floor



Ground Floor



Lower Level Floor



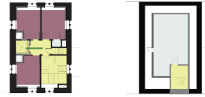
- Community Space
- Classrooms
- Offices
- Library
- Circulation
- Building Support
- Circulation & Community Space

Floor Plans

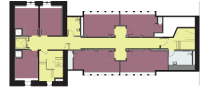
Existing

Proposed

Fifth Floor

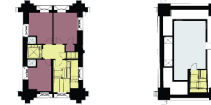


Sixth Floor

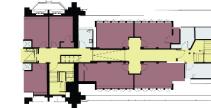


Fourth Floor

Fifth Floor

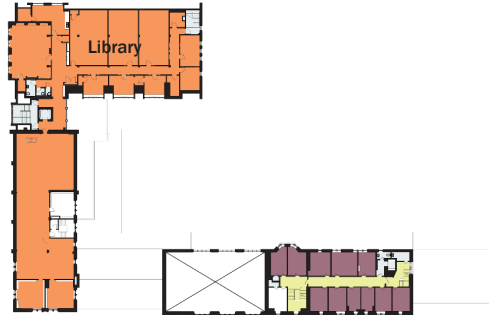


Sixth Floor



Fourth Floor

Third Floor



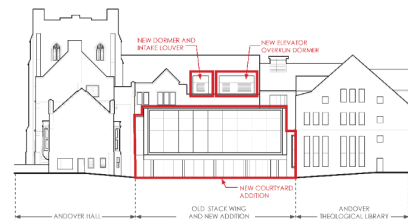
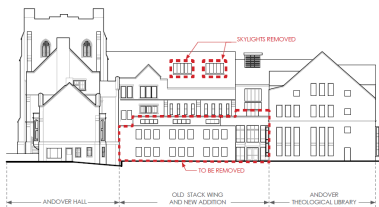
Second Floor



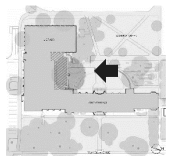
- Community Space
- Classrooms
- Offices
- Library
- Circulation
- Building Support
- Circulation & Community Space

Existing

Proposed



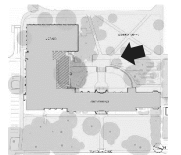
- Improved main entrance
- New collaboration / common / convening spaces
- Indoor / outdoor meeting space
- Better façade design
- New landscape plantings (Replace caliper and canopy of 1 oak tree)



Proposed Rendering



Proposed Rendering



Positive Outcomes

- **Intellectual Life:** Provide spaces to enhance the academic exchanges among HDS, the HU community and the wider world of the study of religion.
- **New Community Space:** Provides multipurpose room to host critically important programs that are free and open to the public, eg. *HDS Religious Literacy Project*.
- **Minimal Footprint:** Minimizes addition in terms of footprint and square footage in a location that is internal to the campus and minimally visible from a public way.
- **Improved Façade Design:** Replaces incoherent north façade design with integrated, attractive design.
- **Historic Preservation / Façade Renewal:** Invests in an existing facility and an historic structure.
- **Innovative Sustainability:** Target LEED Gold through new measures including smart ventilation, heat recovery, water conservation, improved energy efficiency, healthy building materials.
- **Outdoor-Indoor Connection:** Integrates common spaces and café with building's front door and campus green.
- **Tree Plantings:** Removes a high risk tree and plants new trees to replace lost caliper and canopy to improve the campus landscape.
- **Improved Landscape:** Enhancing and improving the campus landscape (smart irrigation, drought resistant planting), which will be enjoyed by the neighboring community.
- **Code Compliance:** Improves the building's life safety and accessibility.

END